

PROJECT GALLERY 90

Affordable Art Fair | Melbourne 2019 Catalogue

Kate Hopkinson-Pointer | Simon Palmer | Peter Berner | Cicada Press

For enquiries contact:
Kate Hopkinson-Pointer

info@projectgallery90.com
0402 144 350

Contents

Works by Kate Hopkinson-Pointer	1
Works by Simon Palmer	15
Works by Peter Berner	37
Cicada Press Prints	56

Kate Hopkinson-Pointer



'Night reflection'; oil on plywood, 65x65cm, \$1,290



'Bonfire with Friends'; oil on plywood,
65x65cm, \$1,290



'Pine forest light';
oil on plywood,
120x100cm, \$4,500



'Night Forest'; oil on plywood, 65x65cm,
\$1,290



'Forest light 8'; oil on plywood, 120x100cm, \$4,500



'Forest bonfire';
oil on plywood,
120x100cm, \$4,500



'Cabin light'; oil on plywood,
100x100cm, \$3,950



'Bush fire 1'; oil on plywood, 65x65cm,
\$1,290



'Bon fire 1'; oil on plywood, 65x65cm, \$1,290



'Afternoon light'; oil on
plywood, 120x100cm,
\$4,500



'Afternoon in the forest';
oil on plywood,
120x100cm, \$4,500



'Afternoon forest';
oil on board,
120x100cm, \$4,500



'Bush Fire on the Move'; oil on plywood,
100x100cm, \$3,900



'Bonfire in the forest';
oil on plywood,
120x100cm, \$4,500

Simon Palmer



Coloursubject No.124 'Puce Predilectio'; acrylic on board, 45x45cm, \$450



No. 121 'Delightful Grey'; acrylic on board, 45x45cm, \$450



No. 123 'Cool Mint'; acrylic on board, 45x45cm, \$450



No. 78 'Tangerine Surprise'; acrylic on board, 30x30cm, \$420



No. 32 'Salmon Swathe'; acrylic on board, 30x30cm, \$420



No.92 'Neopolitan Hazelnut'; acrylic on board, 30x30cm, \$420



No.127 'Tan-a-Rama'; acrylic on board, 30x30cm, \$420



No. 120 'Beige Bravado'; acrylic on board, 30x30cm, \$420



No. 117 'Teal Tranche'; acrylic on board, 30x30cm, \$420



No. 105 'Viridian Green'; acrylic on board, 30x30cm, \$420



No. 116 'Spillway Grey'; acrylic on board, 30x30cm, \$420



No. 111 'Mango Tango'; acrylic on board, 30x30cm, \$420



No. 93 'Poolside Green'; acrylic on board, 30x30, \$420



No. 83 'Holiday Blues'; acrylic on board, 30x30, \$420

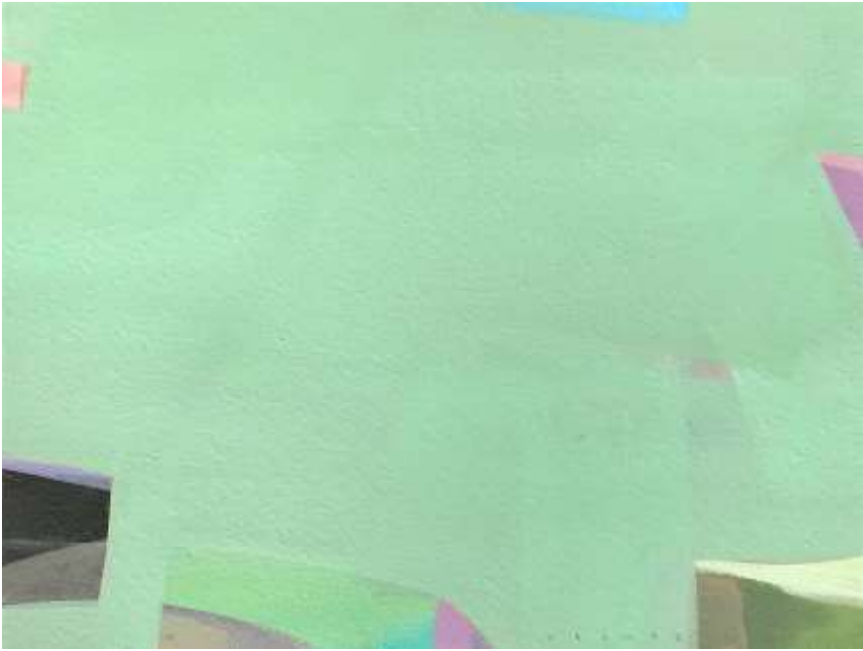
No. 64 'Deep-water Blue'; acrylic on board, 30x22.5cm, \$300



No.88 'Tangential Tan'; acrylic on board, 30x22.5, \$300



No.91 'Candyland Pink'; acrylic on board, 30x22.5, \$300



No. 77 'Viridian Fog'; acrylic on board, 30x22.5, \$300



No. 90 'Dark Earth Brown'; acrylic on board, 30x22.5, \$300



No. 134 'Peach Infusion'; acrylic on board, 90x90cm, \$2,200



No. 118 'Water Views Blues'; acrylic on board, 90x90cm, \$2,200



No. 133 'Blue Profusion'; acrylic on board, 90x90cm, \$2,200



No. 71 'Lime Dialogue'; acrylic on board, 90x90cm, \$2,200



No. 104 'Smokin Salmon'; acrylic on board, 90x90cm, \$2,200



No. 86 'Tangerine Surprise 2'; acrylic on board, 90x90cm, \$2,200



No. 138 'Spilt Cream'; acrylic on board, 90x90cm, \$2,200



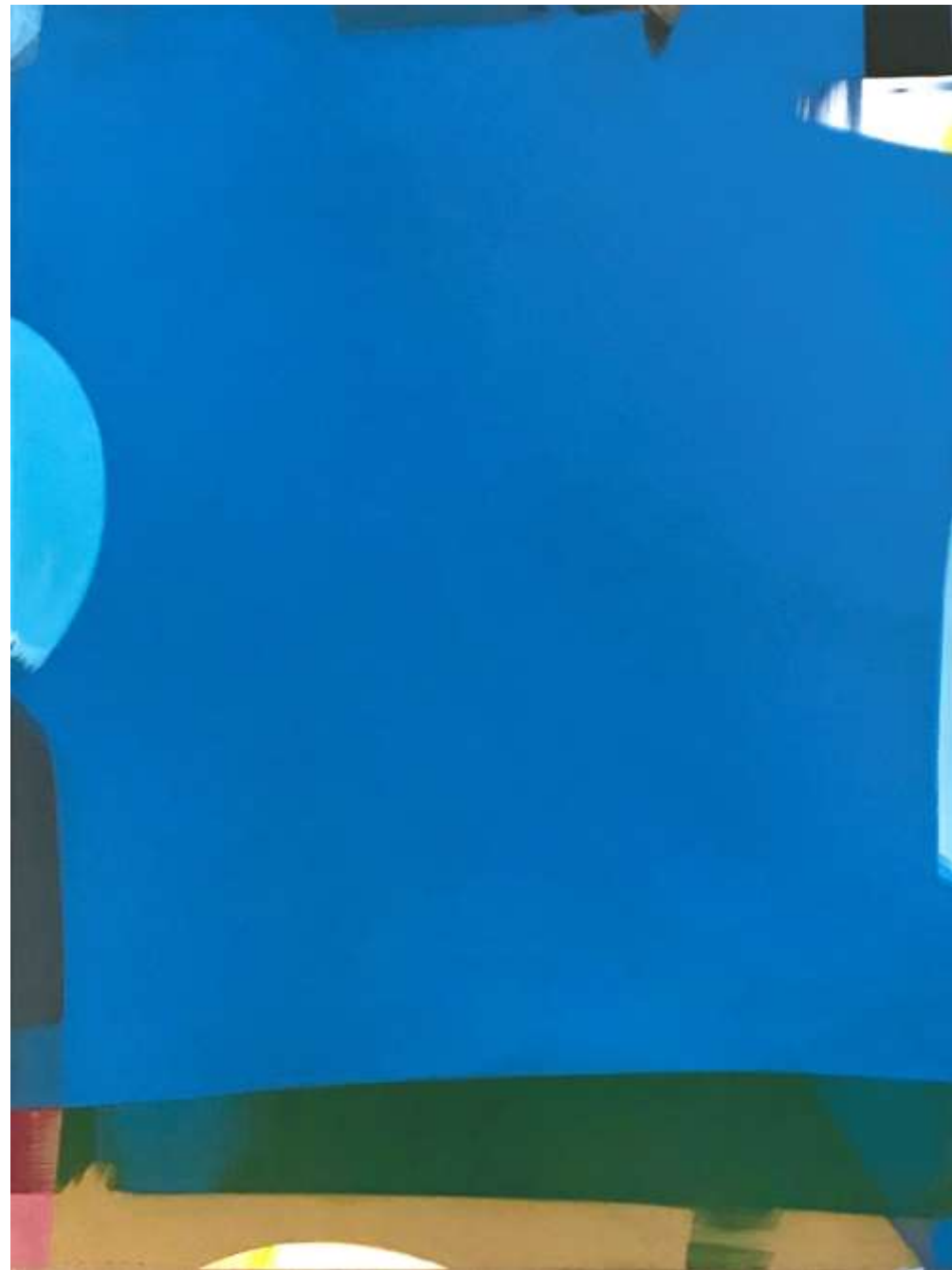
No. 137 'Beige Rampage'; acrylic on board, 90x120cm, \$2,500



No. 136 'Olive Outlook'; acrylic on board, 90x120cm, \$2,500



No. 135 'Circus Yellow'; acrylic on board, 90x120cm, \$2,500



No. 97 'Harbour Blue revisited'; acrylic on board, 90x120cm, \$2,500



No. 140 'Flashy Red 2'; acrylic on board, 90x120cm, \$2,500



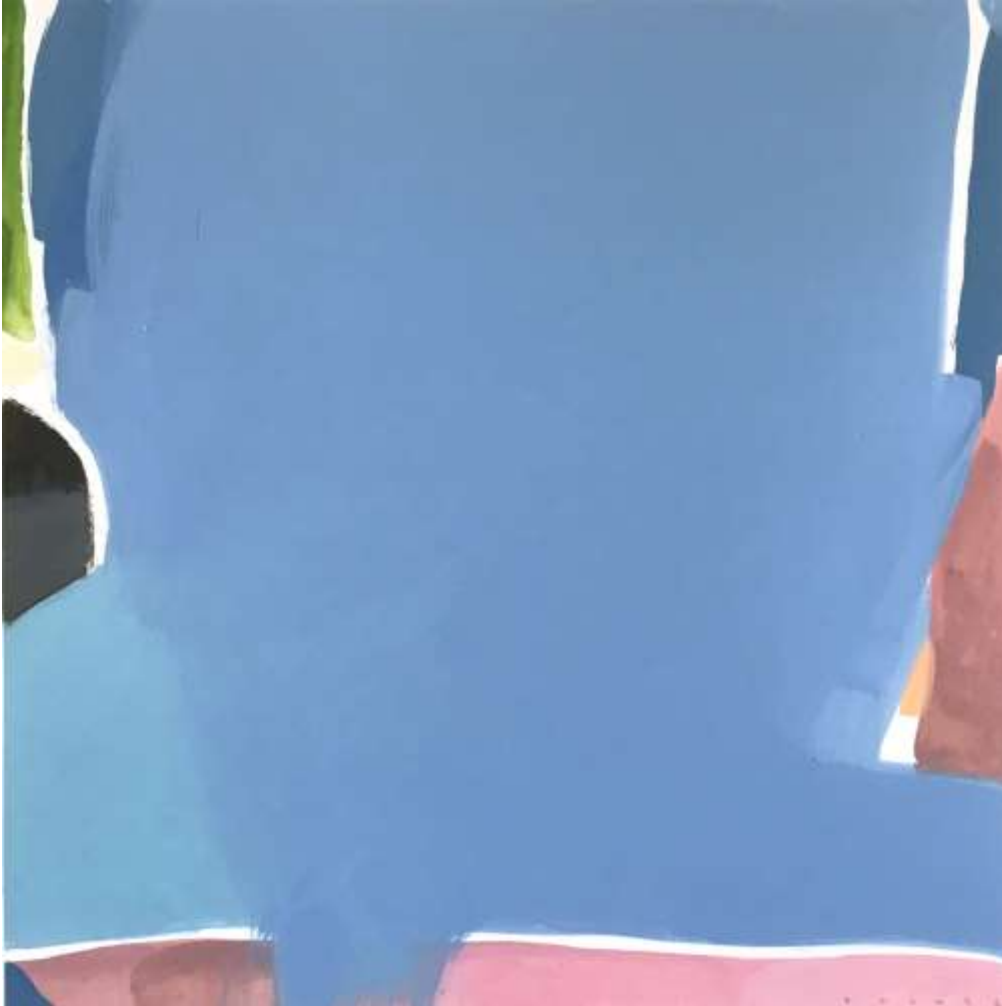
No. 139 'Coastline Blue 2'; acrylic on board, 90x120cm, \$2,500



No. 159 'Languid Lavender'; acrylic on paper, unframed, 36x36cm, \$330



No. 158 'Beachy Peach'; acrylic on paper, unframed, 36x36cm, \$330



No. 160 'Meridian Blue'; acrylic on paper, unframed, 36x36cm, \$330



No. 161 'Peppermint Push'; acrylic on paper, unframed, 36x36cm, \$330



No. 162 'Fade to Yellow'; acrylic on paper, unframed, 36x36cm, \$330



No. 157 'Peach Parfait'; acrylic on paper, unframed, 36x36cm, \$330



No. 156 'Ocean Blue'; acrylic on paper, unframed, 36x36cm, \$330



No. 155 'Clubhouse Green'; acrylic on paper, unframed, 36x36cm, \$330



No. 154 'Racing Green'; acrylic on paper, unframed, 36x36cm, \$330



No. 153 'Twilight Blue'; acrylic on paper, unframed, 36x36cm, \$330



No. 152 'Dreamy Creamy Yellow'; acrylic on paper, unframed, 36x36cm, \$330



No. 151 'Light Tan'; acrylic on paper, unframed, 36x36cm, \$330



No. 150 'All Over Tan'; acrylic on paper, unframed, 36x36cm, \$330

Peter Berner



'The Hibiscus Room, 2am'; acrylic on board, 72x81cm, \$1,790



'There was nothing else'; acrylic on board,
123x125cm, \$2,900



'Anxiety becomes you'; acrylic on canvas, 110x120cm,
\$2,900



'Nobody dreams of being in Real Estate';
acrylic on board, 123x123cm, \$2,900



'Noble Bogan'; acrylic on board, 123x123cm,
\$2,900



'The Lap Swimmer'; acrylic on board, 90x91cm,
\$1,990



'Good Advice'; acrylic on board, 70x81cm, \$1790



'Without a shell'; acrylic on board, 80x103cm, \$1,990



'Sometimes...'; acrylic on board, 93x110cm, \$2,350



'Enough'; acrylic on board, 115x122cm, \$2,900



'Too handsome to be alone'; acrylic on board,
123x123cm, \$2,900



'Pin Striped, in profile'; acrylic on board,
124x123cm, \$2,900



'Man of many colours'; acrylic on canvas,
123x125cm, \$2,950

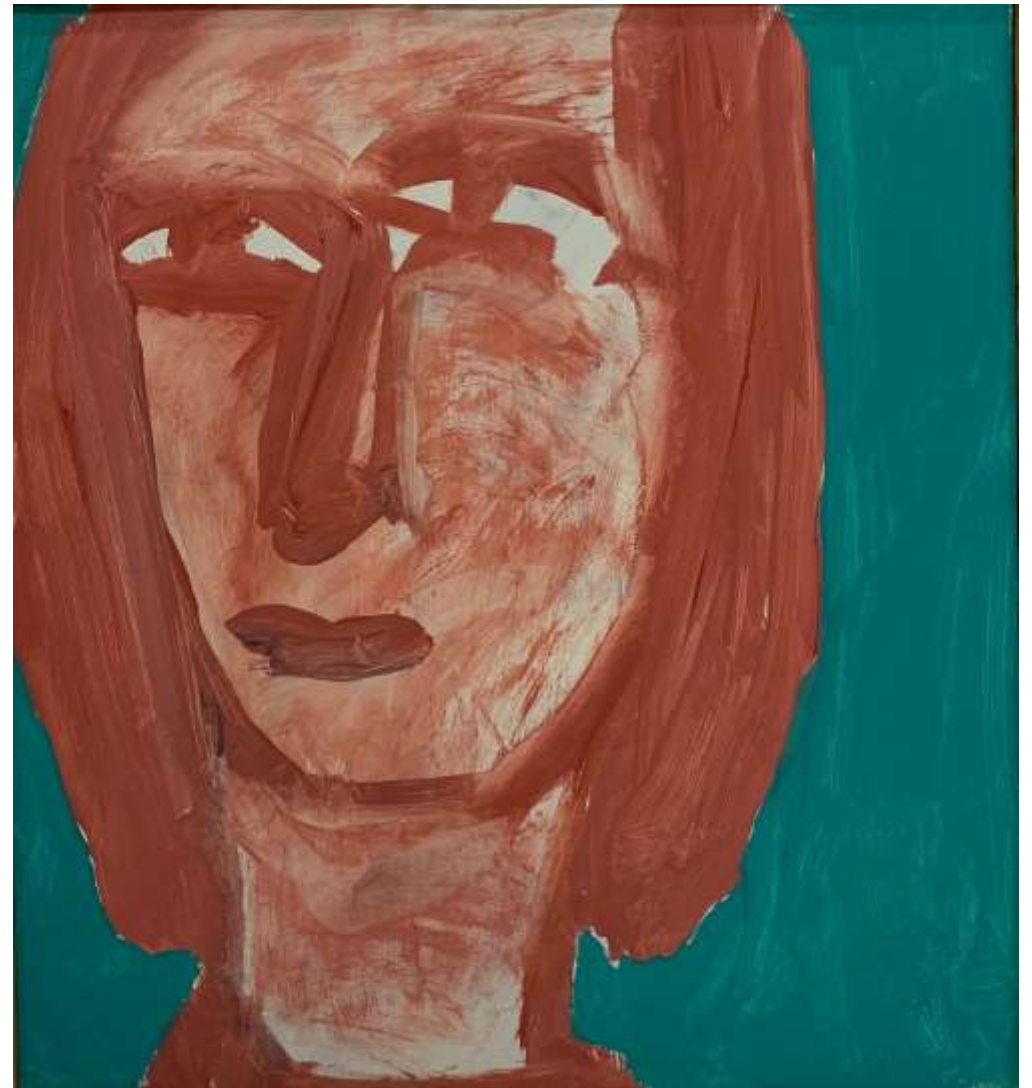
'Neon'; acrylic on board, 61.5x65cm, \$1,400



'Edge of a Moment'; acrylic on board, 41x36cm, \$1200



'Something like that'; acrylic on board, 41x36cm, \$1,200



'She never left'; acrylic on board, 46x39cm, \$1,200



'Surprise'; acrylic on board, 46x37cm, \$1,200



'Newcastle 1983'; acrylic on board, 46x37cm, \$1,200



'Maybe Some Day'; acrylic on board, 61.5x65cm, \$1400



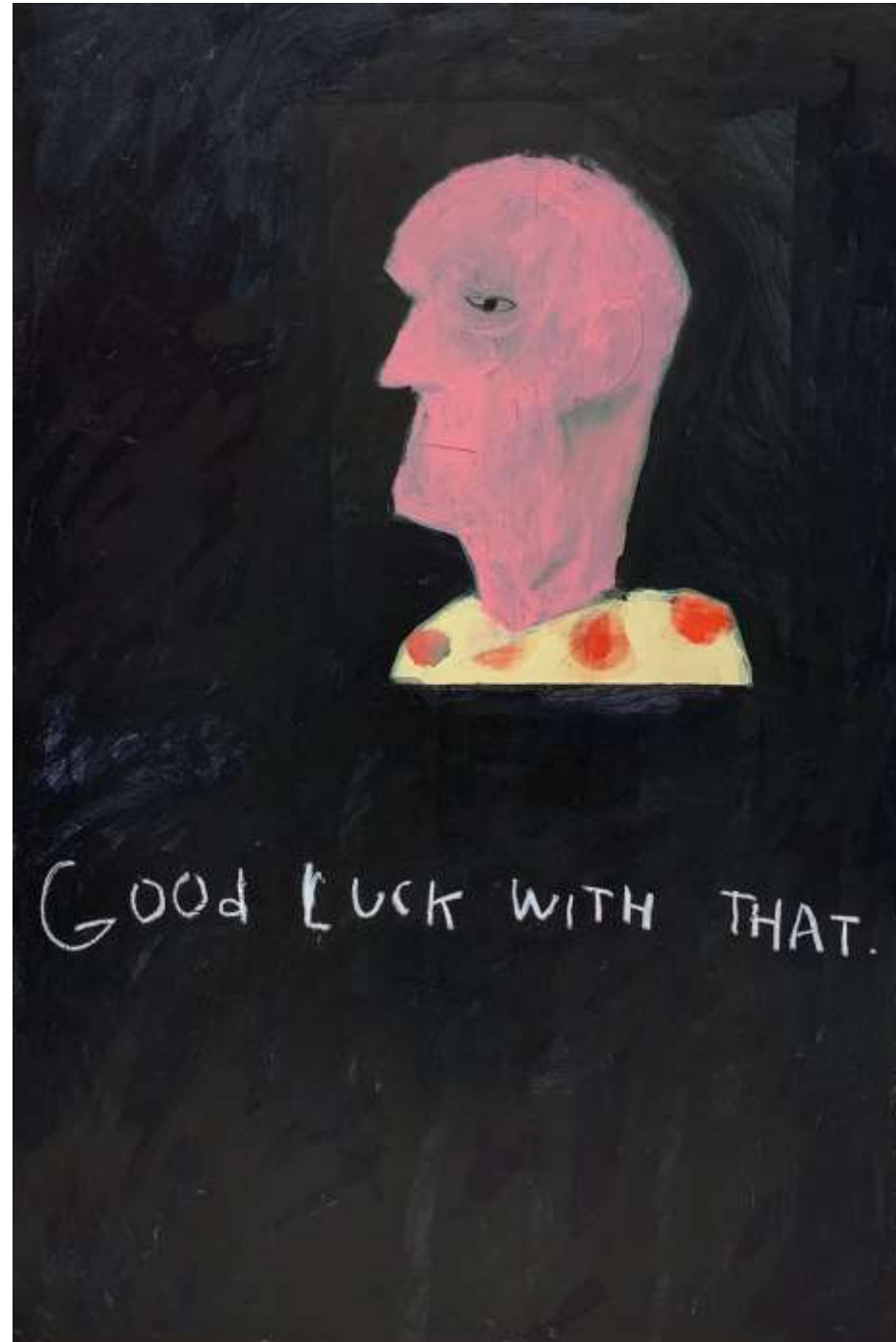
'It wasn't supposed to end like this'; acrylic on board, 56x50cm, \$1,400



'Harsh light at midnight'; acrylic on board, 85x110cm, \$2400



'I didn't invite him'; acrylic on board, 46x39cm, \$1200



'Good luck with that'; acrylic on board,
90x62cm, \$1,900

Cicada Press Prints



Elisabeth Cummings
'Moroccan Village'; AP, etching and
aquatint, 2018, 20.5x24cm, \$1,300

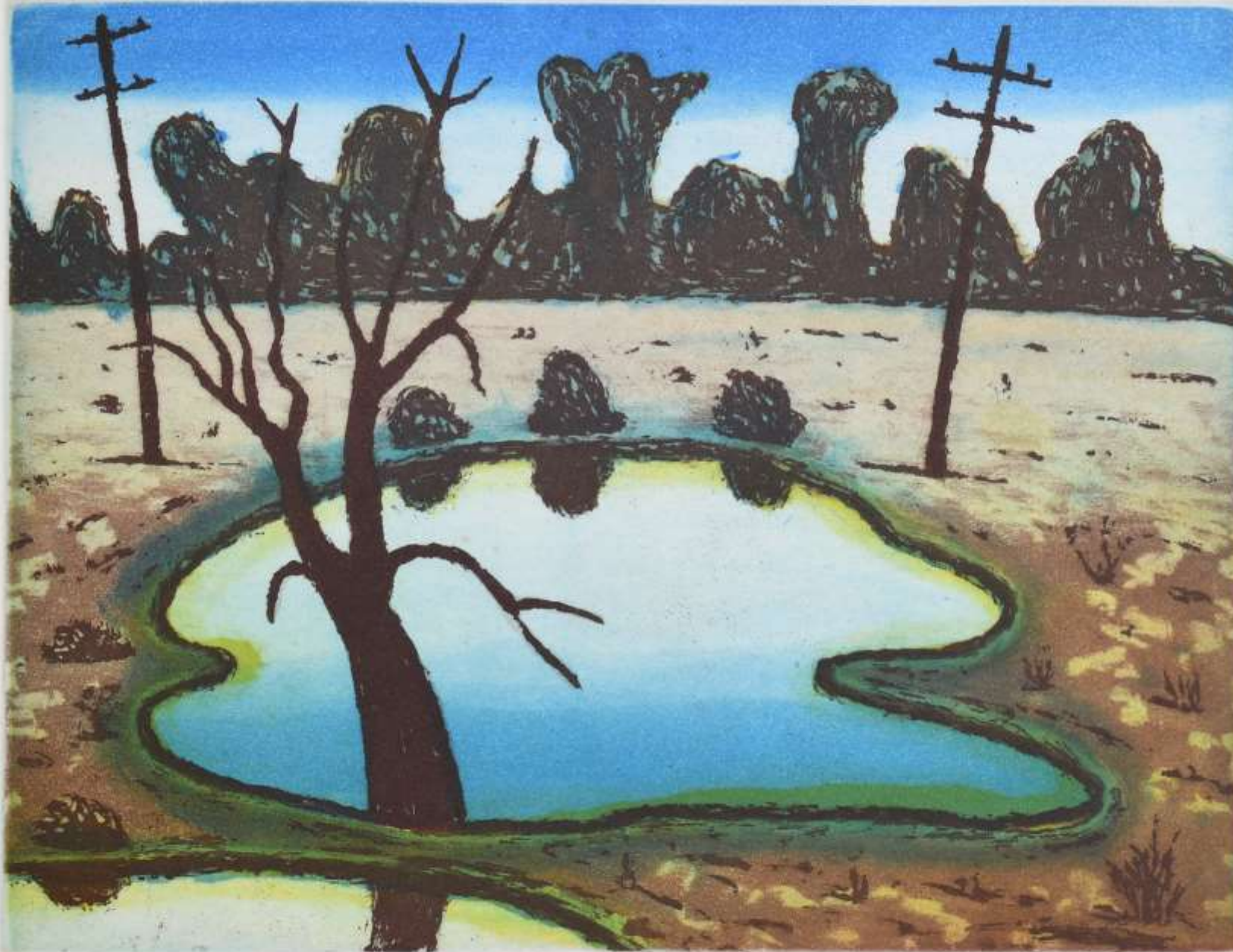


B.A.T.

'Waimea highway near Gore'

Reg Mombassa

Chris O'Doherty aka
Reg Mombassa
'Waimea Highway
near Gore'; PP,
etching and
aquatint, 25x33cm,
unframed, \$650



P. P.

'Two dams, two poles'

Reg Mombassa

Chris O'Doherty aka
Reg Mombassa
'Sleepwalk'; 13/40,
etching and aquatint,
27.5x36cm,
unframed, \$650.00



AR NIGHT WALKING EUAN MACLEOD 1982

Euan Macleod
Represented by Watters Gallery
Sydney

'Night Walking'; Etching and aquatint,
28.5x30cm, \$980 framed / \$700
unframed



Euan Macleod
Represented by
King Street
Gallery: William
Sydney

'Big Mungo';
Etching and
aquatint,
39.5x50cm,
\$1250 framed /
\$900 unframed,



1/15 *Flooded Gum* 10 Jan 2016

Nici Cumpston Represented by Michael Reid, Sydney
'Flooded Gum'; Photoetching, 20.5x56cm, \$1050 framed / \$800 unframed



Michael Kempson Represented by Flinders Street Gallery, Sydney
'AUS'; 2016, Etching and aquatint, 40x32cm, \$800 framed / \$550 unframed

*Please note, in addition to the works shown above,
there are over 150 prints available in our compalation; images coming soon.*

For enquiries contact:
Kate Hopkinson-Pointer

info@projectgallery90.com
0402 144 350