

PROJECT GALLERY 90

'CICADA PRESS COLLECTION'

Prints by various artists

Catalogue: July 2020 Edition

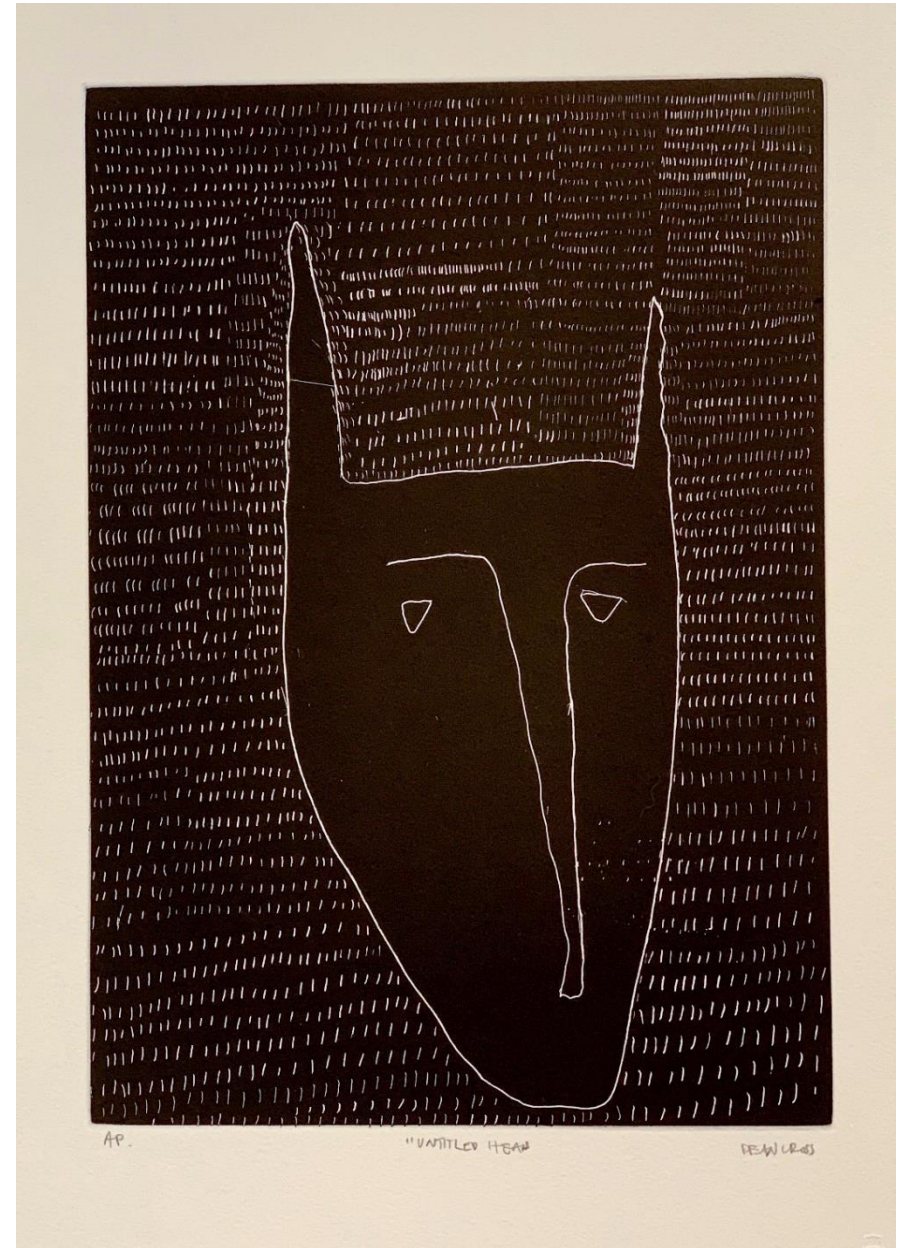
For enquiries contact:
Kate Hopkinson-Pointer

info@projectgallery90.com
0402 144 350

*All artworks shown in this catalogue are subject to availability,
Project Gallery 90 does not represent these artists*



Christine Dumas 'Eurah Leaves' 2012; etching and aquatint, 41x29cm, \$350 unframed



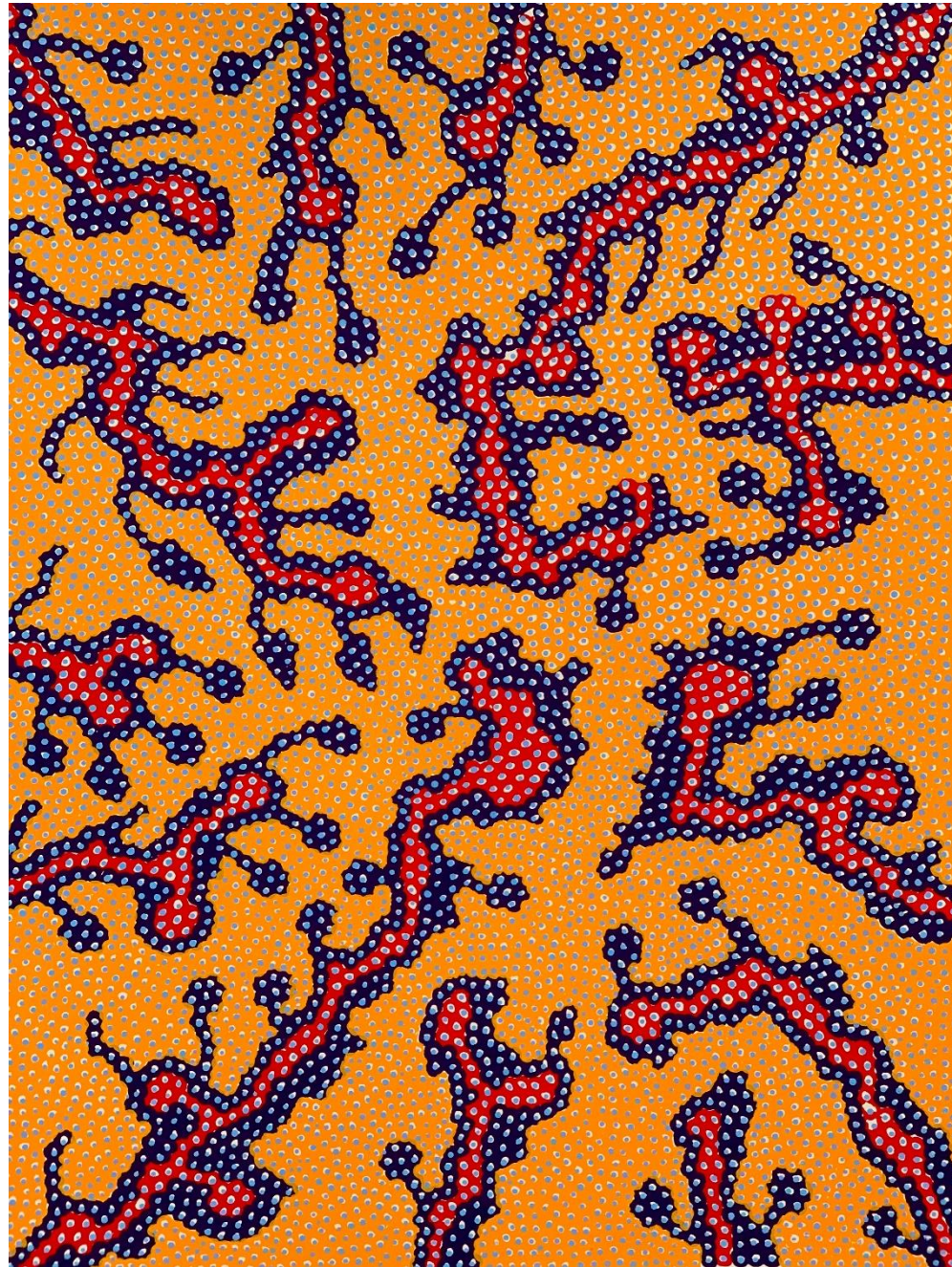
Dean Cross 'Untitled Head' 2019; etching and aquatint, 35x35cm, \$350 unframed



Dean Cross 'Midnight Mongrel' 2019; etching and aquatint, 25x34.5cm, \$400 unframed



Gordon Hookey 'Dogs in Suits' 2012; lithograph, 46x36cm, \$950 unframed



Robert Fielding 'Milkana Kutju' 2015; screen print, 76x56cm, \$780 unframed



Laurel Nannup 'Noongar Ancestors' 2016; etching and aquatint, 49x59cm, \$700 unframed



AP

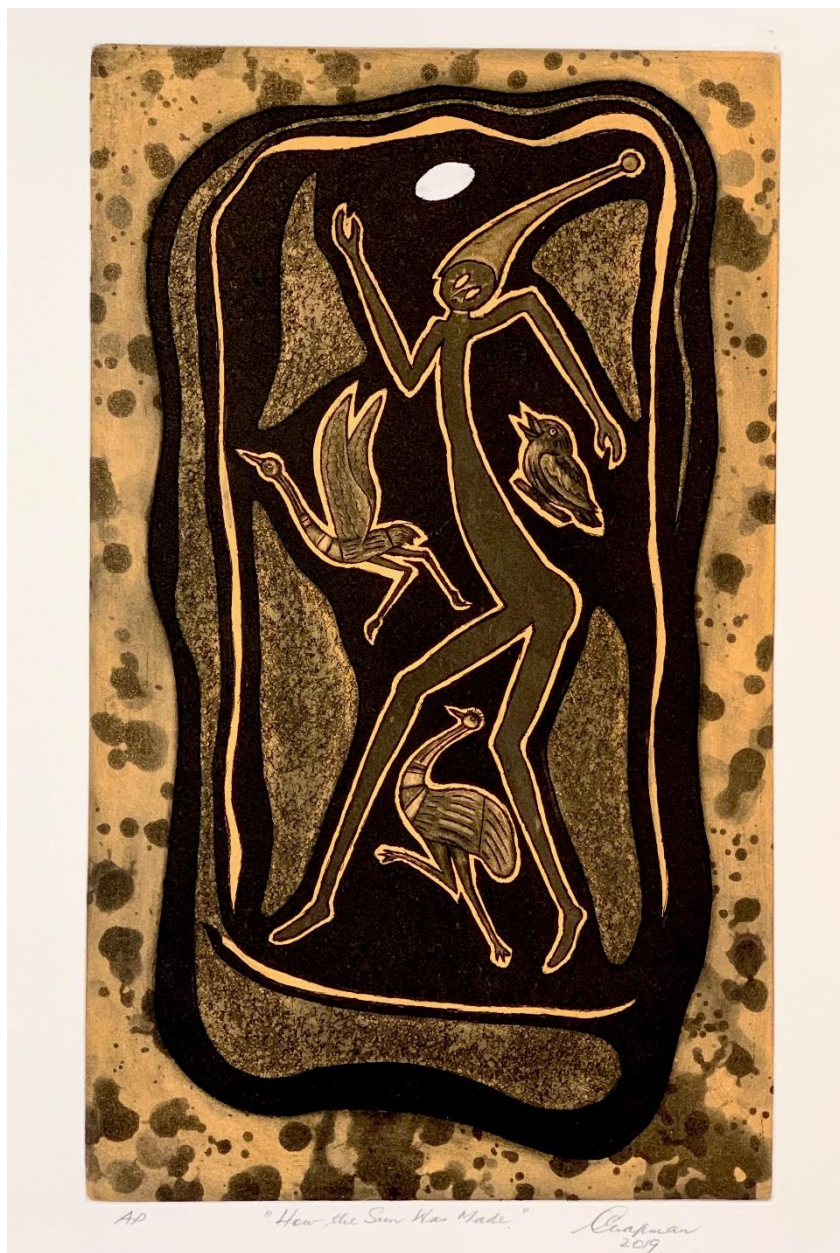
Falling Stones

L Nannup 16.

Laurel Nannup 'Falling Stones' 2016; etching and aquatint with surface roll, 29.5x39cm, \$400 unframed



Laurel Nannup 'Fish hunter' 2016; etching and aquatint with surface roll, 29x39cm, \$400 unframed



Vic Chapman 'How the Sun Was Made' 2019; etching and aquatint, 50x30cm, \$580 unframed



Vic Chapman 'Goanna and Black Snake' 2015; etching and aquatint 50x30cm, \$580 unframed



Vic Chapman 'The Dogs of Bahloo' 2015; etching and aquatint, 39.5x26.5cm, \$380 unframed



Vic Chapman 'The Fire Makers' 2017; etching and aquatint, 32x25cm, \$380 unframed



Mark Bovey (Canada) **Untitled** 2016; etching and aquatint, 33x24.5cm, \$600 unframed



Mark Bovey (Canada) **Untitled** 2016; etching and aquatint, 33x24.5cm, \$600 unframed



Euan Macleod '**Tramp**'; etching and aquatint
21.5x16cm, \$450 unframed



Euan Macleod '**Trek**'; etching and aquatint,
21.5x16cm, \$450 unframed



Euan Macleod '**Trudge**'; etching and
aquatint, 21.5x15.5cm, \$450 unframed



Euan Macleod **'Smoke'** 2004; etching and aquatint, 30x25cm, \$700 unframed



Euan Macleod **'Interior'** 2004; etching and aquatint, 30x25cm, \$700 unframed



Euan Macleod 'Waterman' 2017; etching and aquatint, 25x30cm, \$700 unframed



A/P

'Two dams, two poles'

Reg Mombassa

Reg Mombassa 'Two dams, two poles'; etching with aquatint, 25x33cm, \$690



Reg Mombassa 'Opera house, early evening'; etching with aquatint, 37x29cm, \$790 Unframed



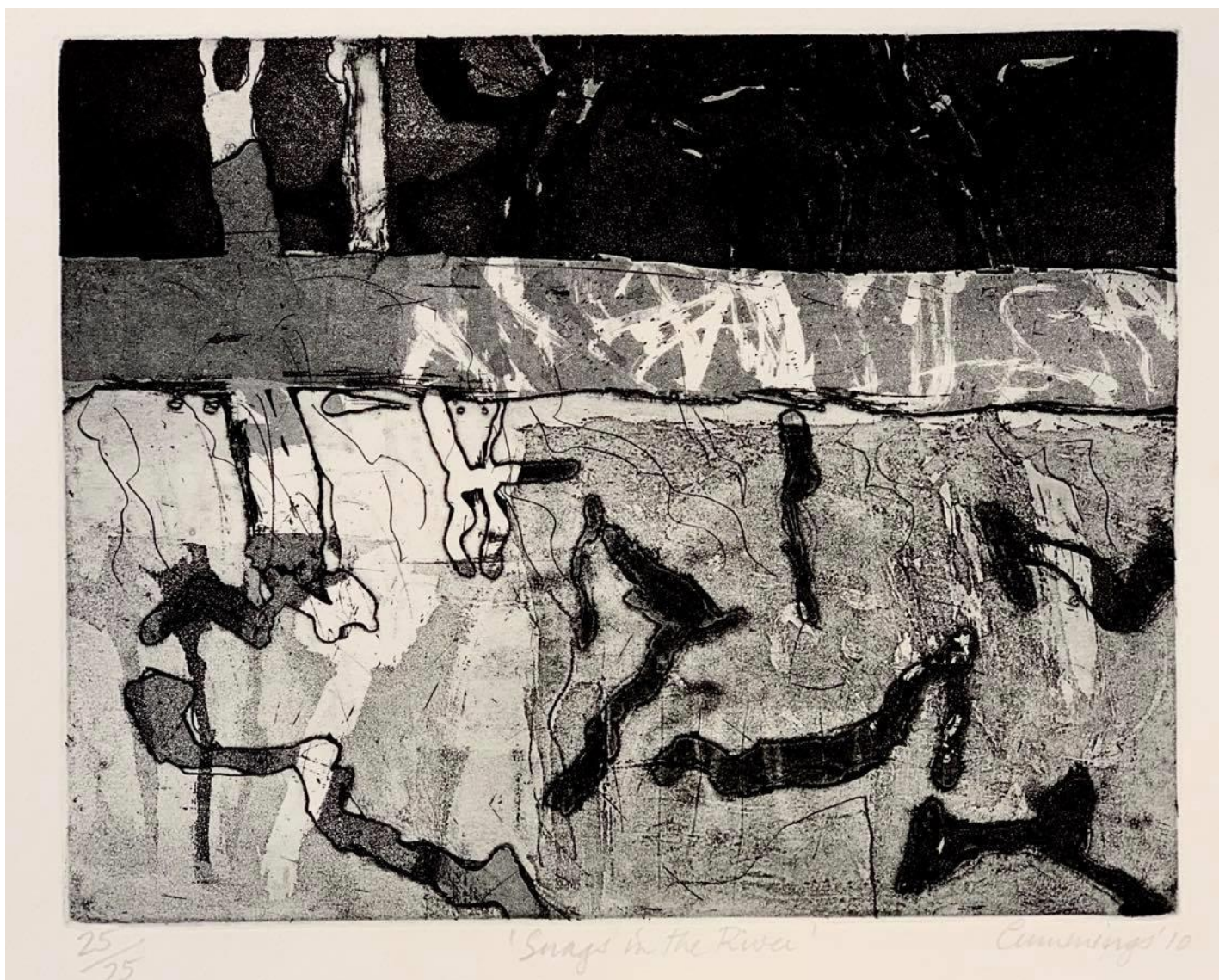
Elisabeth Cummings 'Coal under the river' 2010; etching and aquatint, 23.5x29.5cm, \$1,100
unframed



Elisabeth Cummings 'Farm in drought' 2018, etching and aquatint, 25x35cm, \$900 unframed



Elisabeth Cummings 'Fog in the Murray' 2016, etching and aquatint, 25x38.5cm, \$800 unframed



Elisabeth Cummings 'Songs in the River' 2010, etching and aquatint, 23x28.5cm, \$700 unframed

For enquiries contact: info@projectgallery90.com
Kate Hopkinson-Pointer 0402 144 350

*All artworks shown in this catalogue are subject to availability,
Project Gallery 90 does not represent these artists*