

PROJECT GALLERY 90

'NEW WORKS'

Works by:

James Needham | Kate Herbert-Roche | Anthony Cahill

2021 Catalogue

For enquiries contact:
Kate Hopkinson Pointer

info@projectgallery90.com
0402 144 350

All artworks shown in this catalogue are subject to availability

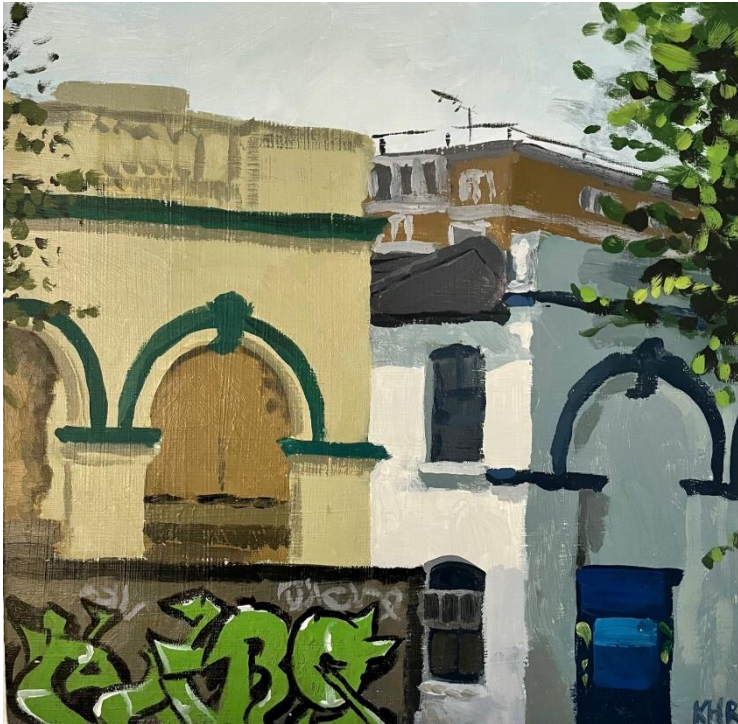
Contents:

Kate Herbert-Roche	1
Anthony Cahill	13
James Needham	22

All works shown are unframed unless otherwise specified

*We offer framing for any of these pieces in a variety of styles,
please enquire for a quote*

Kate Herbert-Roche



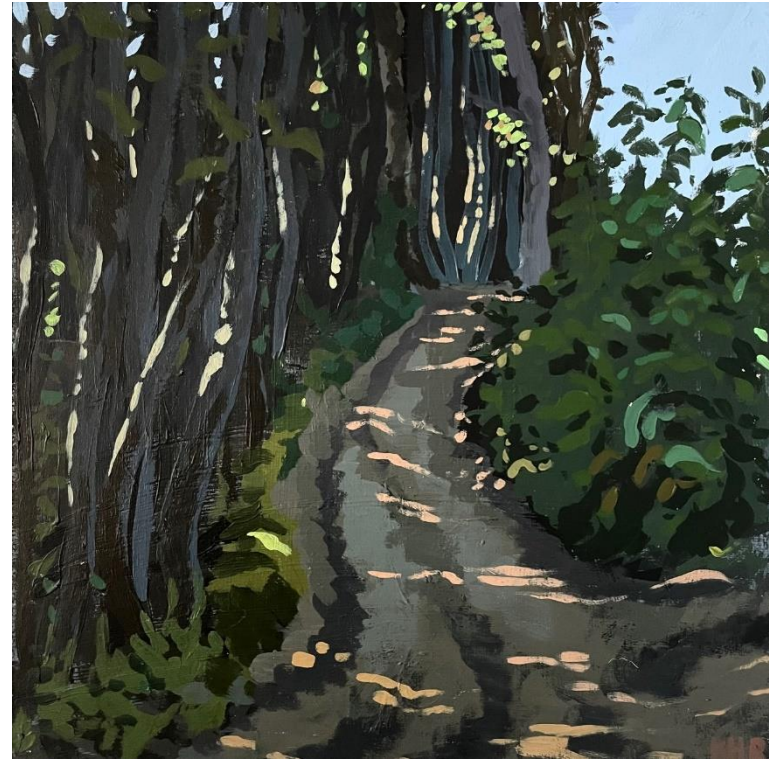
'Eaton road, Hove'; acrylic on board, 30x30cm, unframed, \$750



'Road to Jill Windmill'; acrylic on board, 30x30cm, unframed, \$750



'The Litlington White Horse'; acrylic on board, 30x30cm, unframed, \$750



'Wilderness Wood A-K'; acrylic on board, 30x30cm, framed, \$850



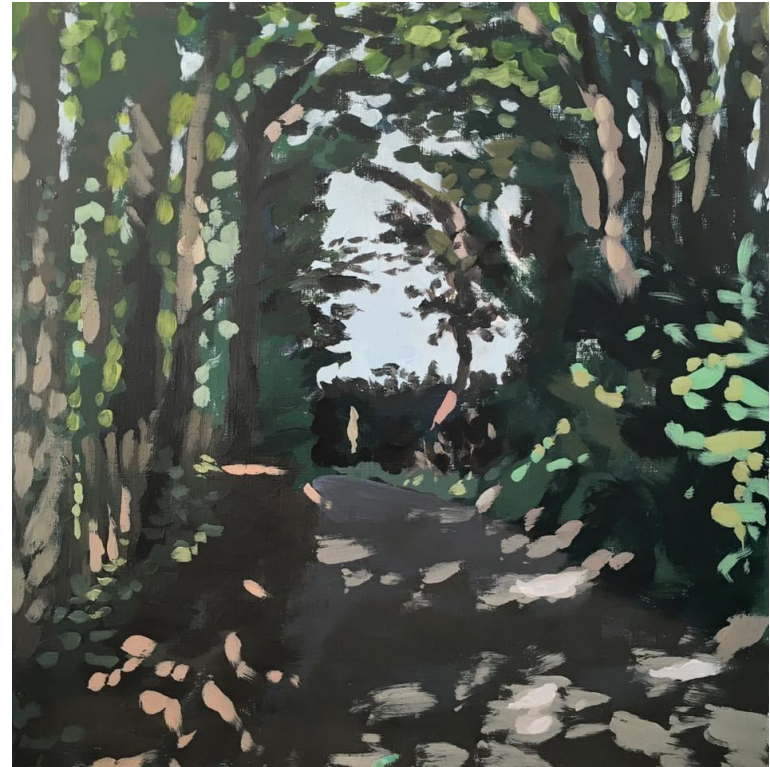
'The Sea at Hove IV'; acrylic on board, 24x30cm, framed, \$750



'Balmer Lawn, New Forest'; acrylic on board, 30x30cm, unframed, \$750



'View from Devil's Dyke'; acrylic on board, 30x30cm, framed, \$850



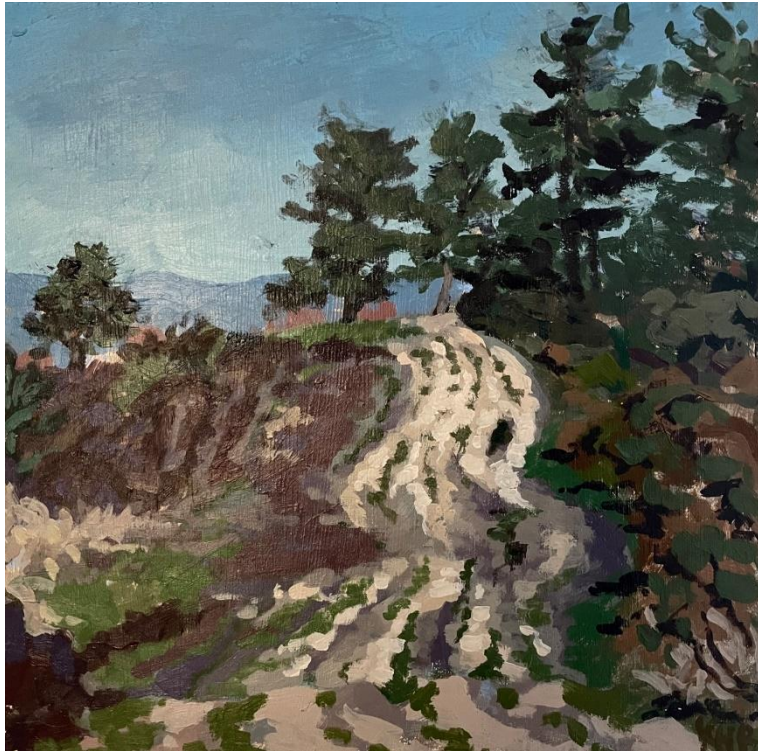
'Sandy Lane, Framfield'; acrylic on board, 30x30cm, unframed, \$750



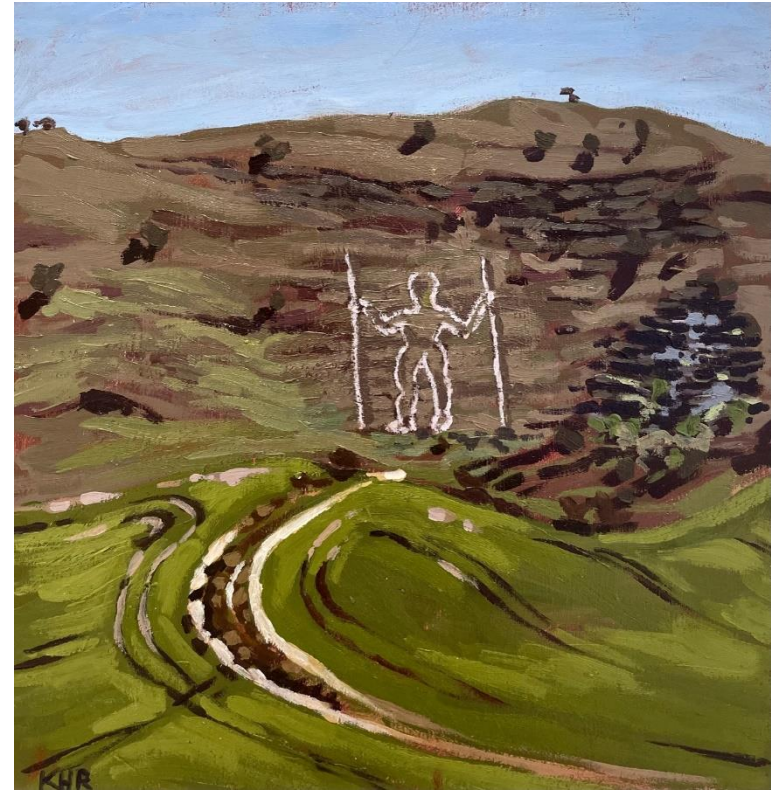
'Still Winter Here'; acrylic on board, 30x30cm, framed, \$850



'Harvey's Lane V'; acrylic on board, 18x23.5cm, unframed, \$350



'Into the Hundred Acre Wood'; acrylic on board,
30x30cm, unframed, \$750



'The Long Man of Wilmington'; acrylic on board,
30x30cm, unframed, \$750



'Bluebells on Witches Lane'; acrylic on board, 18x23.5cm, unframed, \$350



'Birling Gap, Tide out'; acrylic on board, 30x30cm, unframed, \$750



'Luminance at Birling Gap'; acrylic on board, 30x30cm, unframed, \$750



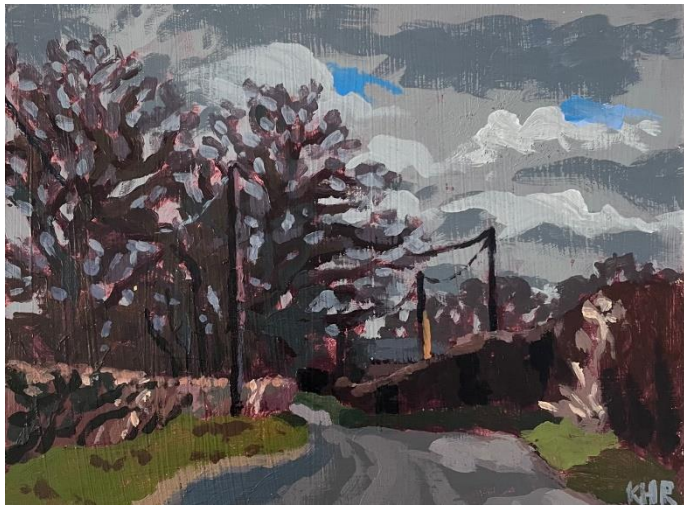
'Birling Gap, Tide In'; acrylic on board, 30x30cm, unframed, \$750



'Light in the Woods, Late Afternoon'; acrylic on board, 24x18cm, unframed, \$350



'In Among The Bluebells'; acrylic on board, 23.5x18cm, unframed, \$350



'Bradford's Lane'; acrylic on board, 18x23.5cm, framed, \$450



'Gill's Lap'; acrylic on board, 30x30cm, unframed, \$750



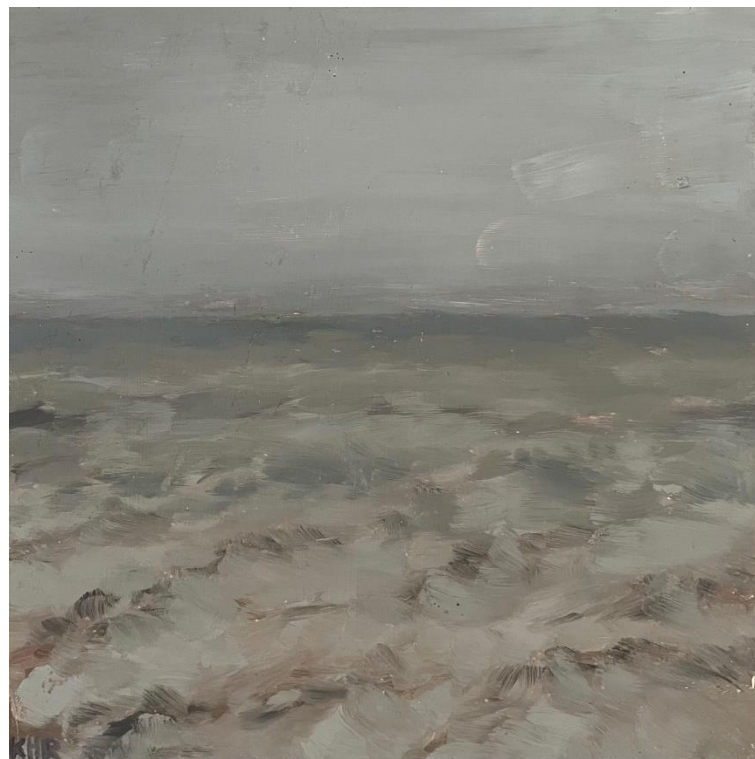
'Harvey's Lane IV'; acrylic on board, 30x30cm,
unframed, \$750



'Thurlstone Rock II'; acrylic on board, 30x30cm,
unframed, \$750



'Thurlstone Rock I'; acrylic on board, 30x30cm,
unframed, \$750



'The Sea at Hove I'; acrylic on board, 30x30cm,
unframed, \$750

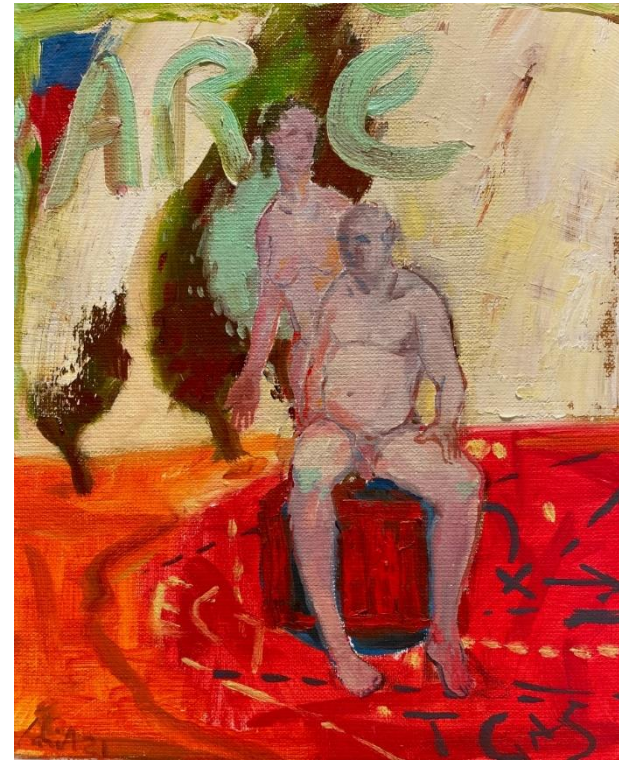
Anthony Cahill



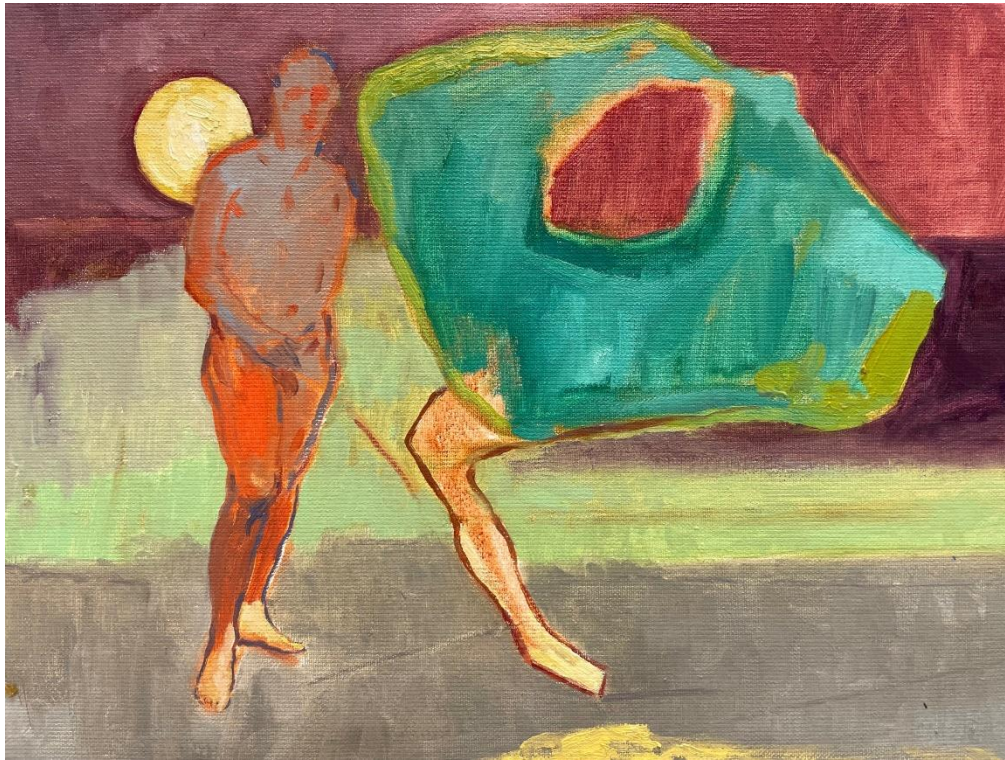
'A'; oil on canvas, 51x81cm, \$1,990



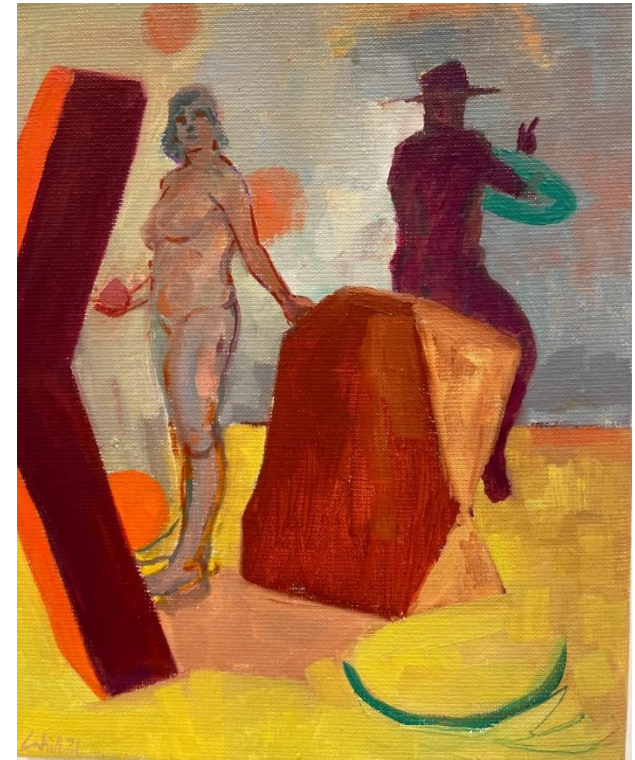
Untitled; oil on canvas, 30x24cm, \$690



'Are'; oil on canvas, 30x24cm, \$690



'Walk in the park'; oil on canvas, 30x40cm, \$1,150



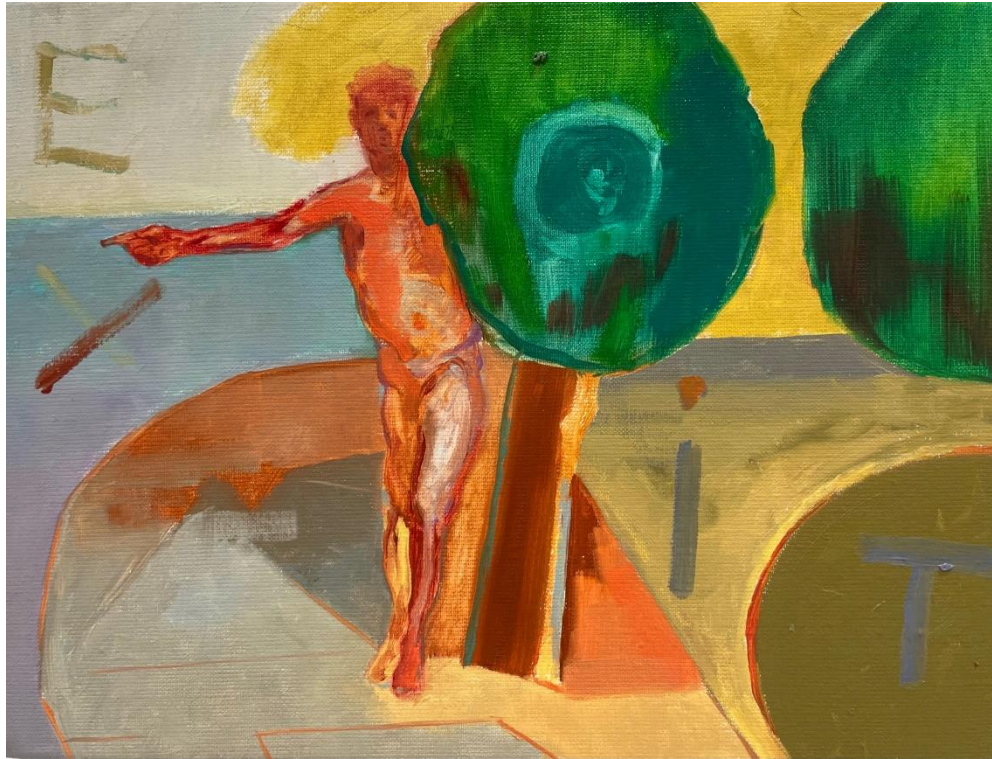
'Gleamers'; oil on canvas, 30x24cm, \$690



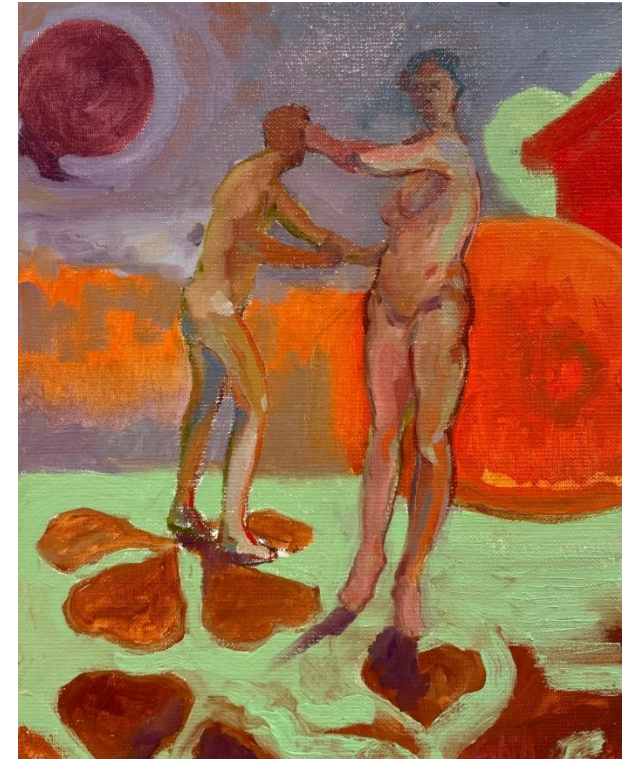
'Glove'; oil on canvas, 30x40cm, \$1,150



'Two dogs and a bad idea'; oil on canvas, 40x50cm, \$1,290



'Exit'; oil on canvas, 30x40cm, \$1,150



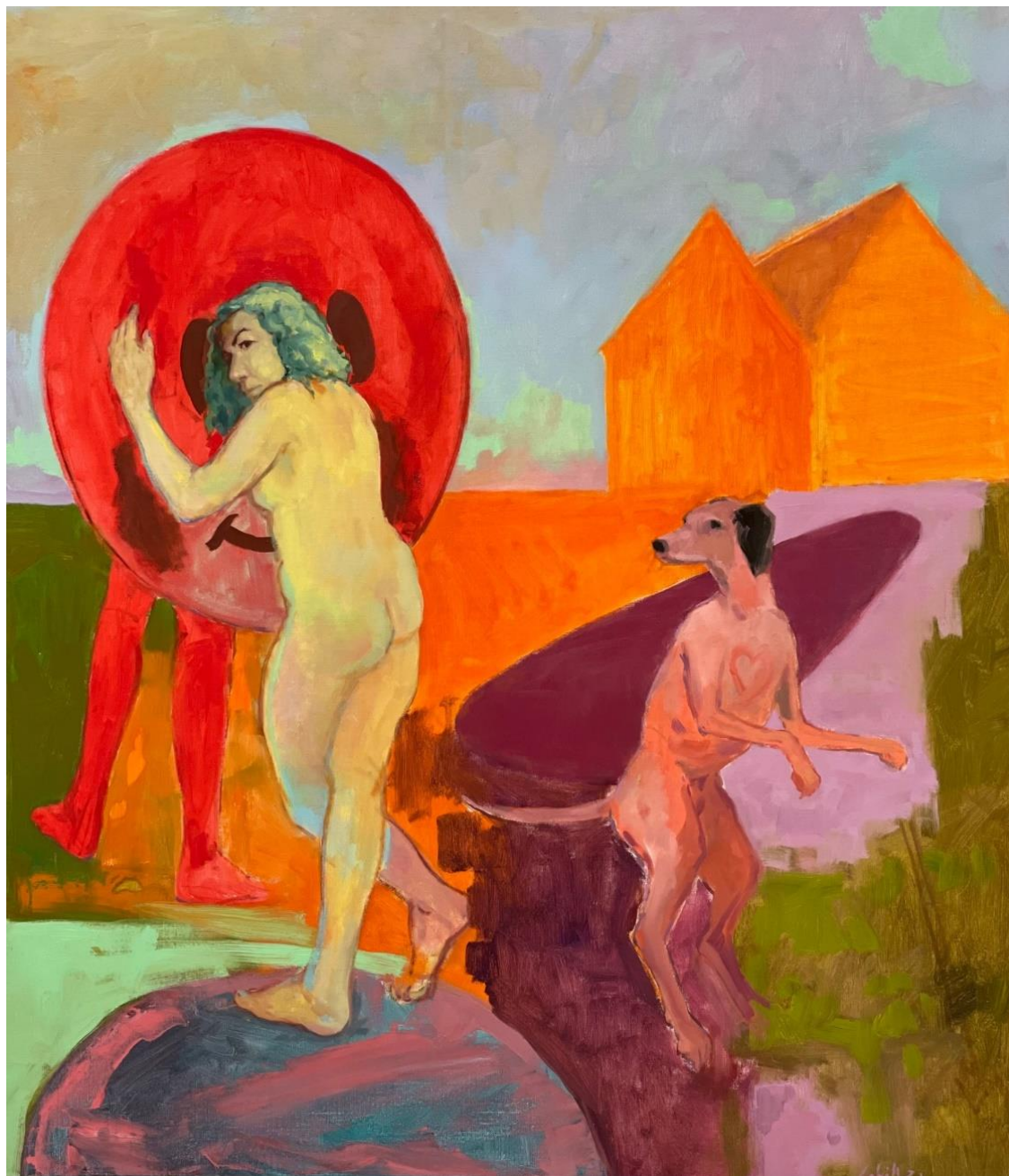
'In Clover'; oil on canvas, 30x24cm, \$690



'Accidental landscape'; oil on canvas, 24x30cm, \$690



'Well'; oil on canvas, 50x50cm, \$1,390



'The Irish goodbye'; oil on canvas, 120x97cm, \$2,900

James Needham



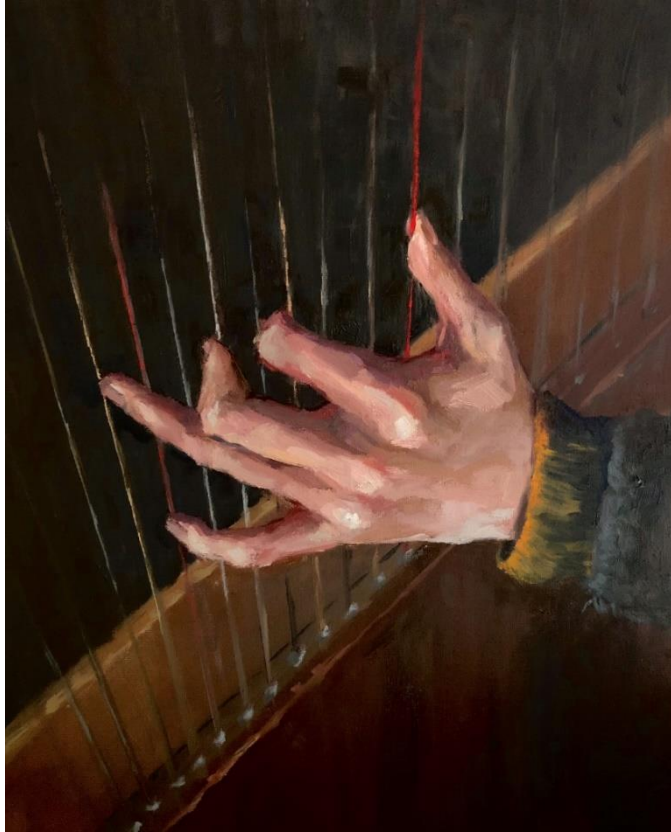
'Holly's knees'; oil on canvas, 35x45cm, \$1,390



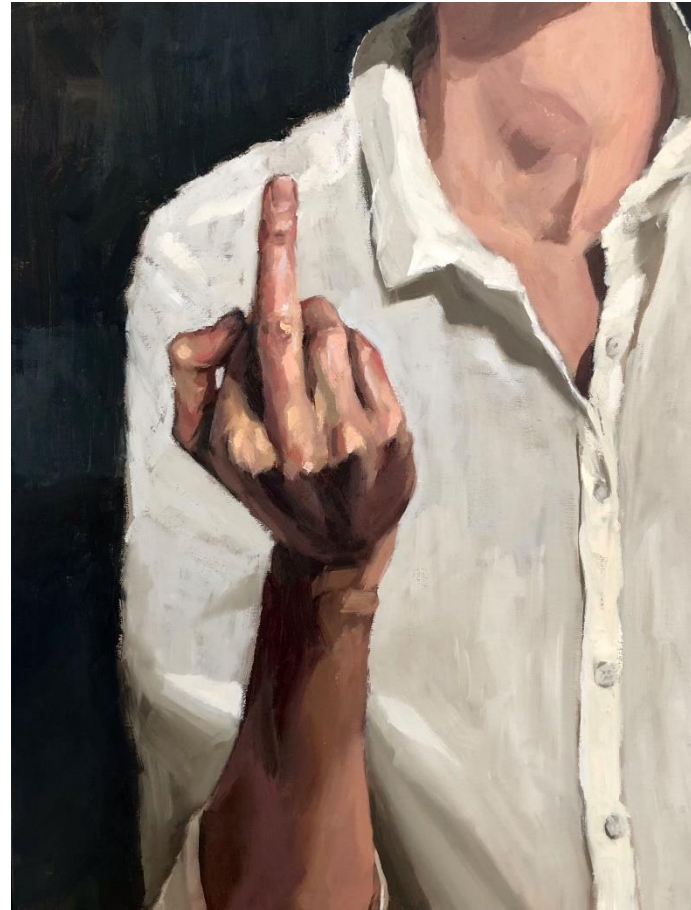
'Touch VIII'; oil on canvas, 30x40cm, \$1,290



'The snake handler'; oil on board, 30x40cm, \$1,290



'The Harpist'; oil on canvas, 28x35cm, \$1,190



'The finger'; oil on canvas, 30x40cm, \$1,290



'The dog park'; oil on canvas, 35x45cm, \$1,390



'Bernadett's hands'; oil on canvas, 28 x35cm, \$1,190

For enquiries contact: info@projectgallery90.com
Kate Hopkinson Pointer 0402 144 350

All artworks shown in this catalogue are subject to availability

Project Gallery 90® 2021

90 Oxford St. PADDINGTON NSW 2021.