

PROJECT GALLERY 90

'THE MEMORY OF TREES'

Works by:

Rhett Brewer & Ron McBurnie

2020 Catalogue

For enquiries contact:
Kate Hopkinson-Pointer

info@projectgallery90.com
0402 144 350

Contents

Rhett Brewer	1
--------------	---

Ron McBurnie	15
--------------	----

Rhett Brewer

Artist's Statement

"I live at the edge of a forest in the Blue Mountains that spans to the south, uninterrupted by houses or settlements for almost 200 kilometres. The small village where I live is surrounded by bush on all sides. Trees are our constant companions and we live and interact in a shared space.

I set out to make a series of paintings that celebrated this primal relationship we have with trees. Every forest is different. Some are pleasant, shady, welcoming places that invite you to explore. The light inside these places is sometimes reminiscent of a Gothic cathedral, especially the rain forest in the Megalong Valley of the Blue Mountains; featured in some of these works. Some forests are impenetrable, harsh places that are challenging and formidable; even threatening.

As a painter, one of my first considerations in selecting a subject is its formal possibilities. What potential does it offer me for colour, composition, light and tone while being true to the particulars of the place? I hope these abstract or formal values play a role in communicating my experience of being there to a viewer in the gallery.

'The Memory of Trees' - I can close my eyes and recall individual trees and the patches of forest and creek banks I played in as a kid. I dream of those places and those trees nightly. They have been etched into my memory for life. I remember trees, but do trees remember us? We certainly affect trees every day. We have cut them down in every place we have ever lived since we invented a stone axe. We have changed so much of our environment by doing so and now it seems we are reaping the grim reward of our actions.

Half way through painting this series, I had a bushfire burn into my property and scorch the trees to black. The whole nation has been traumatised by the worst fire season on record; with the hottest average temperatures. I'm now painting the new growth in my backyard, the new hope that maybe we might have learnt something about respecting trees and other lifeforms. That we are actually a part of something; not apart from and above everything."



'Ghost Grey'; 2019, oil and acrylic on board, 59x42cm, \$1,850 framed



'Purple Mist'; 2019, oil and acrylic on board, 59x42cm, \$1,850 framed



'Green Light'; 2019, oil and acrylic on board, 59x42cm, \$1,850 framed



'Red Forest'; 2019, oil and acrylic on board, 59x42cm, \$1,850 framed



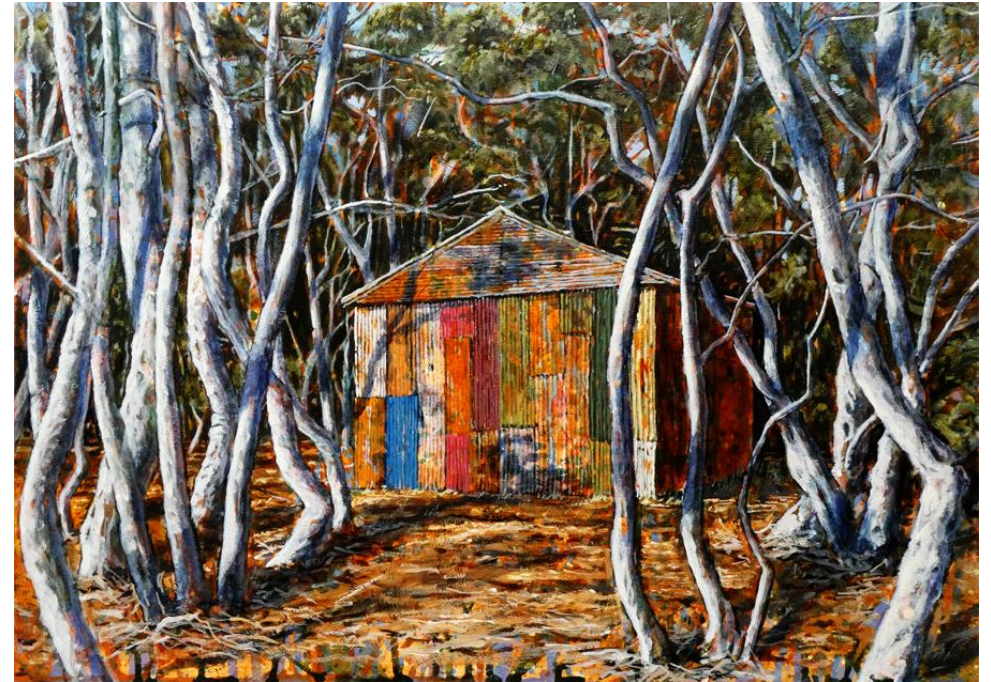
'Golden Cave'; 2019, oil and acrylic on board, 59x42cm, \$1,850 framed



'Threshold'; 2019, oil and acrylic on board, 59x42cm, \$1,850 framed



'Sydney Water'; 2019, oil and acrylic on board, 59x42cm, \$1,850 framed



'Scully's Shed'; 2019, oil and acrylic on board, 59x42cm, \$1,850 framed



'Sundance'; 2019, oil and acrylic on board, 59x42cm, \$1,850 framed



'Calendar Art'; 2020, acrylic on board, 59x42cm, \$1,850 framed



'Megalong Coachwood Creek'; 2020, acrylic on board, 59x42cm, \$1,850 framed



'Bushfire Buddha'; 2019, acrylic on board, 59x42cm, \$1,850 framed



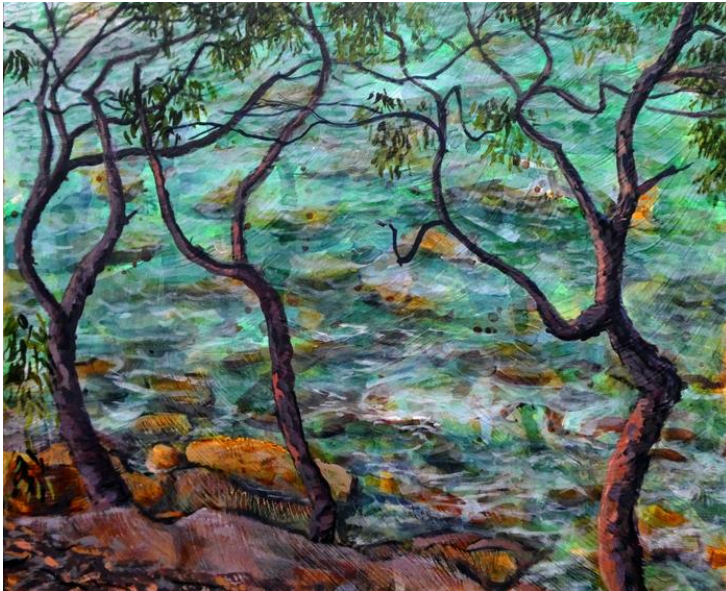
'Megalong Pathway'; 2020,
102x153cm, acrylic on canvas,
\$5,900 unframed



'Angophoras at Bradleys Head 1'; 2019, 25x20cm, acrylic on board, \$590 framed



'Angophoras at Bradleys Head 2'; 2019, 25x20cm, acrylic on board \$590 framed



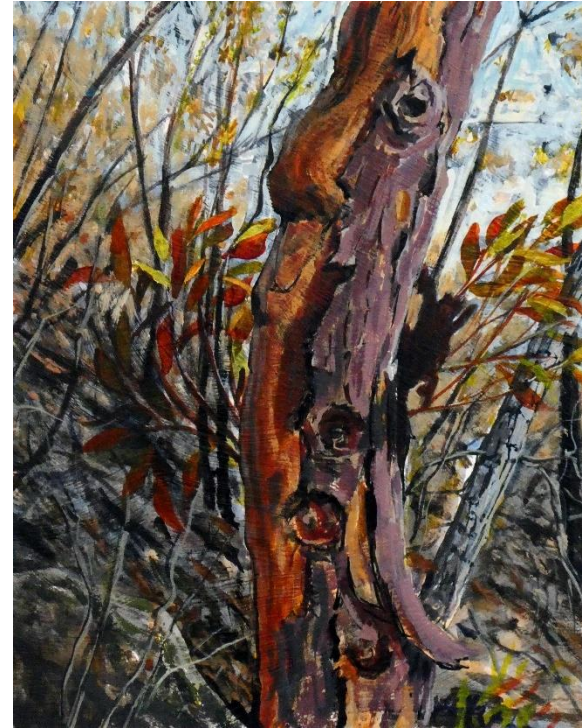
'Angophoras at Bradleys Head 3'; 2019, 25x20cm, acrylic on board, \$590 framed



'Angophoras at Bradleys Head 4'; 2019, 25x20cm, acrylic on board, \$590 framed



'New Life, Woodford 1'; 2020, 20x25cm, acrylic on board,
\$590 framed,



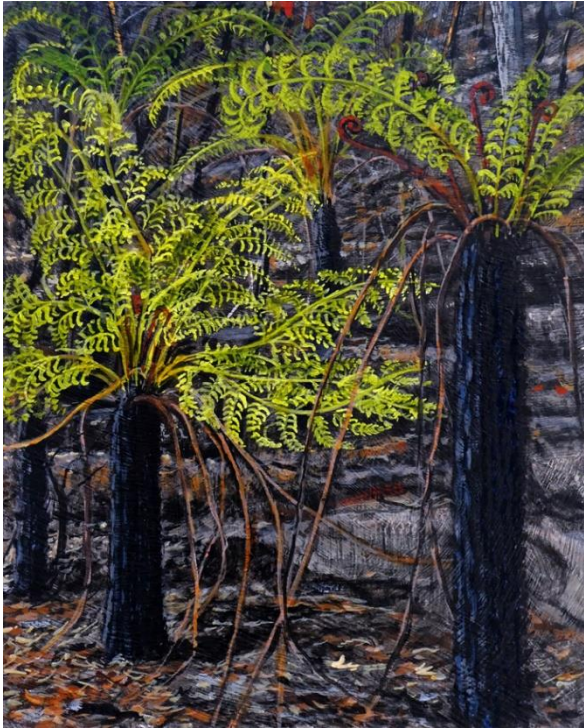
'New Life, Woodford 2'; 2020, 20x25cm, acrylic on board,
\$590 framed



'New Life, Woodford 3'; 2020, 20x25cm, acrylic on board, \$590 framed



'New Life, Woodford (southern Sky)'; 2020, 20x25cm, acrylic on board, \$590 framed



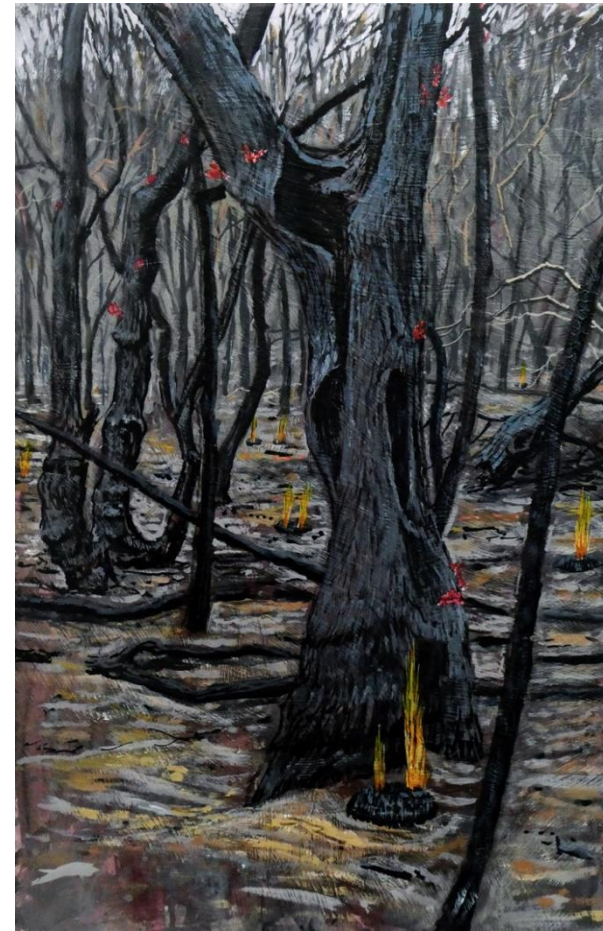
'New Life, Woodford 4 (Tree Ferns)'; 2020, 20x25cm,
acrylic on board, \$590 framed



'New Life, Woodford 5 (Cracked)'; 2020, 20x25cm,
acrylic on board, \$590 framed



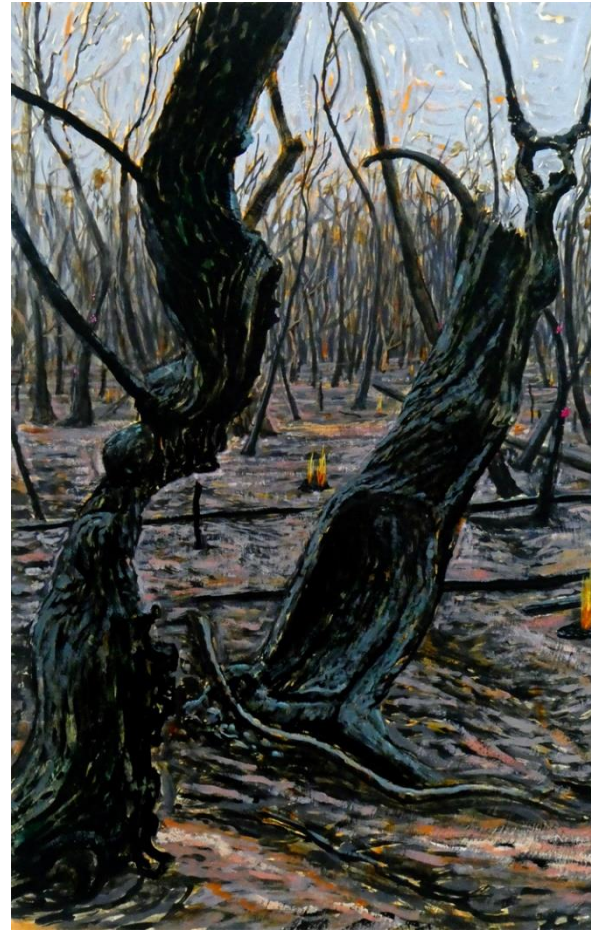
'After the fire, Woodford (plein air)'; 2019, 40x25cm, acrylic on board, \$790 framed



'Bells Line 1'; 2020, 25x40cm, acrylic on board, \$790 framed



'Bells Line 2'; 2020, 25x40cm, acrylic on board,
\$790 framed



'Bells Line 3'; 2020, 25x40cm, acrylic on board,
\$790 framed

Ron McBurnie

Artist's Statement

*"There are many special places that I continue to return to when I draw and paint.
I Initially draw them from life, as a means of discovery, as a way to stamp their details and the
experience of being there into my memory.
On further visits to these places, I begin to perceive and record all of the differences from my
earlier visits.
With each visit my understanding of the place grows, as does its importance in my memory.
Eventually some of the places take on a mystical quality for me.
I think or dream about them when I'm not there.
I make drawings and etchings of them from memory.
They become part of a narrative and a mythology that I can shape and build upon because I
know the places so well.
Even when I am not there, they will continue to grow as places of longing in my heart."*



'Rainforest with Turkeys'; 2019, White Ink and on black paper,
29.5x42cm, \$1,650 framed



'View from Arcadia'; 2019, White Ink and on black paper,
29.5x42cm, \$1,350 unframed



'Paper Bark Trees Ross River'; 2019, White Ink and on black paper, 29.5x 42cm, \$1,350 unframed



'Woven Trees'; 2019, White Ink and on black paper, 29.5x42cm, \$1,650 framed



'Hidden in the Rainforest'; 2019, White Ink and on black paper, 29.5x42cm, \$1,650 framed



'Small waterfall Longlands Gap'; 2019, White Ink and on black paper, 29.5x42cm, \$1,650 framed



'Through the trees, Guerilla Bay'; 2017, White Ink and on black paper, 36x51cm, \$1,590 unframed



'From the Orchid Garden'; 2019, White Ink and on black paper, 29.5x42cm, \$1,650 framed



'Forest Opening, Atherton Tablelands'; 2016,
watercolour on paper, 31x41cm, \$690 unframed



'Shaded Grove'; 2019, Ink and watercolour on paper, 31x41cm, \$1,200 unframed



'Under the Mango Trees, Ross River'; 2019, Ink and watercolour on paper, 36x51cm, \$1,850 framed



'Walk to Clovelly'; 2019, watercolour on paper, 27.5x38cm, \$690 unframed



'Woven Limbs'; 2019, Ink and watercolour on paper, 36x51cm, \$1,900 framed



'Mountain with Lotus Flowers, Townsville'; 2019, White Ink and on black paper, 29.5x42cm, \$1650 Framed

France Series



'Morning in the valley, Alayrac'; 2016, White Ink and on black paper, 50x75cm, \$1,850 framed



'Foggy Morning'; 2016, Ink and watercolour on paper, 36x51cm, \$1,500
unframed



'A walk through time'; 2018, Ink and on paper, 31x41cm, \$1,900
framed



'Under the Full Moon'; 2018, Ink and on paper, 31x41cm, \$1,900 framed



'Hill of Light'; 2016, Ink and body colour on paper, 36x51cm, \$1,600 unframed



'Approaching storm near Cordes'; 2016, Ink and Watercolour on paper, 46x61cm, \$2,290 framed



'Cold Morning Alayrac'; 2016, Ink and Watercolour on paper, 55x75cm, \$2,490 framed



‘Light on the Hillside France’; 2016, Ink on paper, 36x51cm, \$1,600 unframed



'Two Villages'; 2016, Ink and Watercolour on paper, 55x75cm, \$2,490 framed

Etchings



6/20 Pandanus on Pioneer River AM Br 2019

'Pandanus on Pioneer River'; 2019, relief etching, 13.2x18.2cm,
\$590 framed



11/20 mango trees seaforth AM Br 2019

'Mango trees Seaforth'; 2019, relief etching, 13.2x18.2cm,
\$440 unframed



11/20 Mango Trees Eimeo M. B. 2019

'Mango Trees Eimeo'; 2019, relief etching, 13.2x18.2cm, \$590 framed



11/20 Cotton Trees Eimeo Beach M. B. 2019

'Cotton Trees Eimeo Beach'; 2019, relief etching, 13.2x18.2cm, \$440 unframed



11/20 Two Trees M. B. 2019

'Two Trees'; 2019, relief etching, 13.2x18.2cm, \$590 framed



1/20 Mango Trees Ross River M. B. 2019

'Mango Trees Ross River'; 2019, relief etching, 13.2x18.2cm, \$590 framed



'Remains of the Day'; 2019, etching, 42x57.5cm, \$1,590 framed

For enquiries contact:
Kate Hopkinson-Pointer

info@projectgallery90.com
0402 144 350